

# This Week in Childcare Weekly Bulletin



**Issue 21:2026** Week: 25<sup>th</sup> – 29<sup>th</sup> May 2026

Dear Colleagues

These are the announcements for the 25<sup>th</sup> – 29<sup>th</sup> May 2026



## DEADLINES / IMPORTANT DATES

**8 June:** National CPD mapping exercise survey

**2 June @ 3pm:** Annual Early Years Sector Profile

## FOR YOUR INFORMATION

### Programme Readiness 2026 training invite

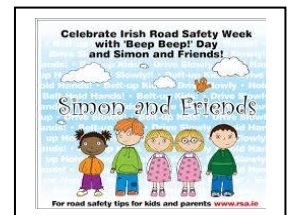
Online training sessions are scheduled for 2 & 3 June 2026. This is a 1-hour session covering information including Fee Tables, Parent Statements, Core Funding, NCS, ECCE & AIM Level 1,4,5 & 7.

Registration links to attend the training are available in the Announcement Section on HIVE.

### National Beep Beep Day 2026

National Beep Beep Day 2026 will take place on Friday 9 October.

The ordering facility for the RSA Beep Beeps Packs, high visibility vests, Simon & Friends booklets and posters will open in early September through [www.rsa.ie](http://www.rsa.ie)



### Annual Early Years Sector Profile

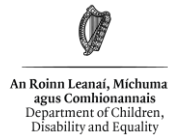
The 2025/26 Annual Early Years Sector Profile (AEYSP) survey will be available on the EY Hive until Tuesday 2<sup>nd</sup> June 2026. All services are encouraged to complete the survey. It is mandatory for all existing Core Funding Partner Services complete the survey within the open window.



---

## National CPD Mapping Exercise \*extended\*

DCDE in partnership with Crowe Ireland, is undertaking a Mapping Exercise to identify existing CPD opportunities across the Early Learning and Care (ELC), School-Age Childcare (SAC) and Childminding sectors. The survey is open to everyone working in ELC, SAC & Childminding and can be accessed here: [DCDE CPD Mapping Exercise - Educators Survey](#). The Irish language versions of the survey/ leagan Gaeilge de na suirbhé anseo are now available. [Tionscadal Léarscála FGL RLMC – Suirbhé Soláthraí](#) ; [Tionscadal Léarscála FGL RLMC - Suirbhé Oideoirí](#) The deadline for the survey has been extended until Monday 8 June. ELC/SAC providers and Childminders are being given an opportunity to engage in focus groups, you can express your interest in engaging with the focus group by completing the form linked below. The deadline to submit an expression of interest is 2 June @ 5.30pm. Please note, the focus groups will be conducted through English only. [Focus Group Expression of Interest Form \(Educators\) -Fill in form](#)



---

## State-led Early Learning and Childcare- Expression of Interest

The Department of Children, Disability and Equality is seeking a not-for-profit operator for the first project under the new programme of capital investment in State-led early learning and childcare. Applicants must be existing not-for-profit early learning and childcare services, registered with Tusla and the Charities Regulator, and participating in Core Funding.



Key dates for this process are as follows:

22 May 2026	Indicate interest in and availability for attending the site visit
27 May 2026	Submit any queries on the process
29 May 2026	Site visit
4 June 2026	Replies to queries will be issued
15 June 2026	Deadline for applications

(noon)

The application form and marking scheme can be accessed [here](#), and the Application Selection Process [here](#). The plans and other details can be found at the following links:

[Boundary details](#)

[Ground floor and roof plans](#)

[Creche sections and elevations](#)

Queries relating to this process should be directed to [elcbuildings@dcde.gov.ie](mailto:elcbuildings@dcde.gov.ie)

---

## NCS Maintenance - Summer Reminder

Service providers are encouraged to review their calendars to reflect any changes to the opening hours during the summer months. Please note that all services are entitled to 10 subsidised closures. If a service intends to close for an extended period, any existing claims for this period should be end-dated. For further information on service calendars, please see the guidance available on the Early Years Hive [here](#).



For further support please contact Pamela: [pamela@kerrycountychildcare.com](mailto:pamela@kerrycountychildcare.com)

---

## Student Fast Track Assessment

The DCDE temporary student fast track assessment application process for students enrolled in a recognized level 6, 7 or 8 early years programme to support services to maintain staff capacity over the summer months is now open.

Students can access the application [Form](#) here. Once completed the application form should be submitted to [EYQualifications@dcde.gov.ie](mailto:EYQualifications@dcde.gov.ie)

If you require further support please contact: Kathryn: [kathryn@kerrycountychildcare.com](mailto:kathryn@kerrycountychildcare.com)

---



An Roinn Leanai, Michuma agus Comhionannais  
Department of Children,  
Disability and Equality

## Jobs Board Advertising

Remember it is free to advertise your vacancies on the Kerry County Childcare Committee Jobs Board.

The more widespread your advertising the higher the response rate.

Email your vacancy details to Kathryn: [kathryn@kerrycountychildcare.com](mailto:kathryn@kerrycountychildcare.com) and we will ensure that they are posted to our website Jobsboard. We also advertise our Jobsboard on our Facebook and Instagram accounts.

Visit our Jobsboard [here](#).

---



## Playful Parenting Webinar (for Infant Mental Health Awareness Week)



Playful Parenting with Dr Joanna Fortune, Psychotherapist, Author & Clinical Consultant  
Monday 8 June @ 10 am. Please scan the QR code to register

## My Little Library 2026

Minister Foley has announced the launch of My Little Library 2026.

The book bags for every child finishing pre-school and starting primary school in September are being delivered to libraries.

Please see links to invitations in [English](#) and [Irish](#), [QR codes](#) to send to parents on WhatsApp and a [poster](#) for your service.



## Early Childhood Ireland research on children's access to EY and SAC

Early Childhood Ireland invites Early Years (EY) and School Age Care (SAC) service providers, managers, administrators, and educators/practitioners who are responsible for, or familiar with, admissions decisions in their settings to take part in a survey exploring admissions policies and practices in EY and SAC services. The survey will remain open until 10<sup>th</sup> June 2026 and can be accessed [here](#)

## QIPP Report Template 2025/26 is Open for Completion

The Core Funding QIPP Report Template 2025/26 is now open on the [CFCRRS Portal](#). The deadline for completion of the 2025/26 QIPP Report is **Friday, 31 July 2026**.

For support, please contact Rachel: 066 7181582 / [rachel@kerrycountychildcare.com](mailto:rachel@kerrycountychildcare.com)



## Updated Aistear Workshop

Kerry CCC are holding a workshop on the updated Aistear framework.

This information packed session will explore the updated language, concepts, principles, guidance for good practice and learning goals in Aistear the Early Childhood Curriculum Framework (2024).

This Session will take place in Kerry County Childcare offices on the following date: Tuesday 16<sup>th</sup> June 6.30pm – 9.00pm.

Bookings: [rachel@kerrycountychildcare.com](mailto:rachel@kerrycountychildcare.com)

---

## **Kerry County Childcare Committee**

We invite you to follow our Instagram page [here](#), visit our website [here](#) and like and follow our [Facebook](#) page for updates and relevant content.



**Kind regards**

**Kerry County Childcare Committee**